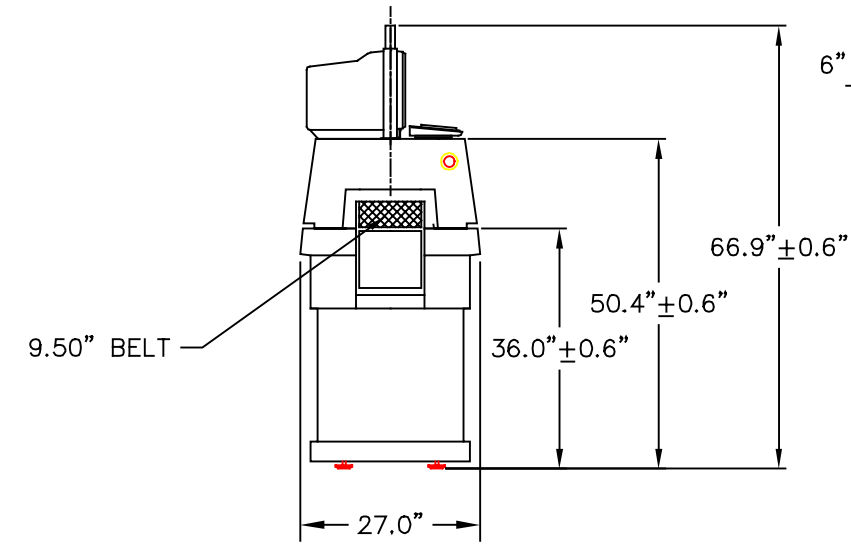
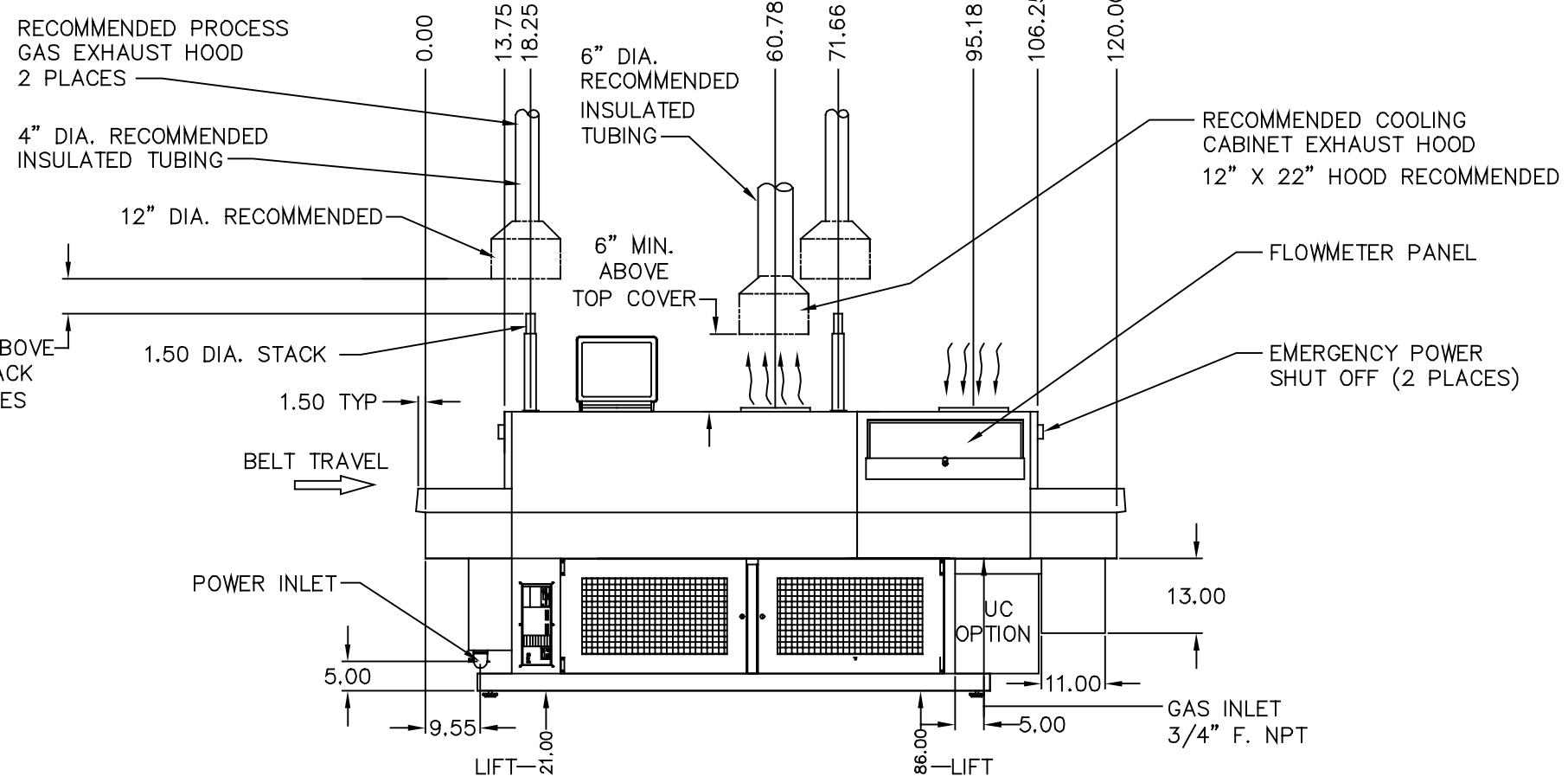
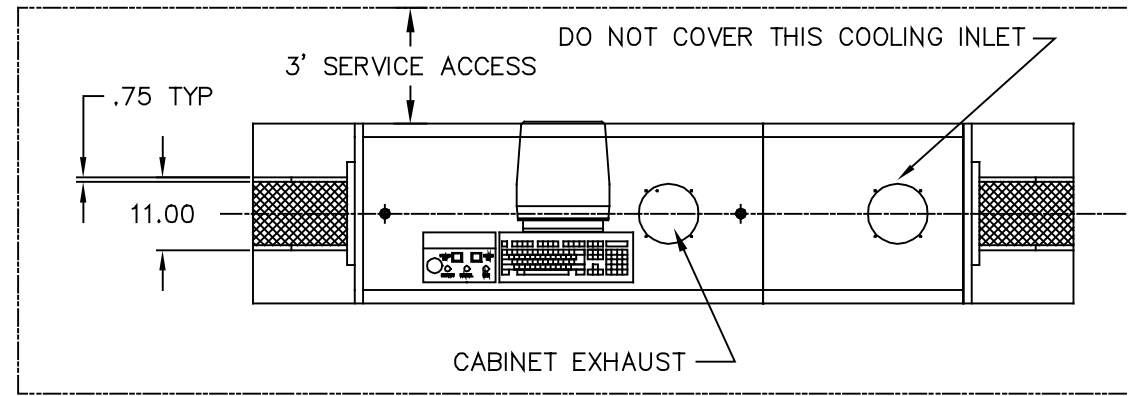


Ⓟ

VOLTAGE		380 V	208 V
PEAK POWER CONSUMPTION		18 KW	22 KW
MAX. CURRENT		27 A	60 A
GAS CONSUMPTION (MAX)		1600 SCFH W/ ALL FLOWMETERS @ 100%	
DRY AIR		70 PSIG REGULATED PRESSURE (MAX)	
NITROGEN			
PROCESS EXHAUST	AVERAGE	650 SCFH	
	MAX	300°C	
CABINET EXHAUST	MAX	500 SCFM	
	MAX	40°C	

REVISIONS			
REV	DESCRIPTION	DATE	APPROVED
A	NEW REL. E.O. # 4753	06/20/95	D. PHAN
B	ADDED 208 V EO# 4898	6/13/96	LZ
C	ADDED -104 EO# 4987	4/22/99	DP



-100 SHOWN

- MAX PARTS HEIGHT 2 INCHES
 - DIMENSIONS SHOWN FOR INSTALLATION REFERENCE ONLY (± 1/4)
 - 1/8" CLEARANCE BELT TO BAFFLE
 - CONVEYOR HEIGHT IS ADJUSTABLE UP OR DOWN 0.6" FROM STATED 36.90"
 - FOR COMPLETE INSTALLATION INSTRUCTIONS CONSULT FURNACE OPERATING MANUAL
- NOTES, UNLESS OTHERWISE SPECIFIED:

ITEM	DRAWING #	DASH #	SIZE	DESCRIPTION
PARTS LIST				
DIMENSIONS ARE IN INCHES UNLESS OTHERWISE SPECIFIED TOLERANCES ARE:				CONTRACT NO.
DECIMALS .XX±.03 .XXX±.010	ANGLES XX°±.5' XX.X±.2'	FRACTIONS X/X±1/32		
MATERIAL				APPROVAL
SEE B/M				DATE
FINISH				TITLE
REF: 32403				INSTALLED DRAWING
NEXT ASSY	USED ON			LA-310
APPLICATION				SIZE
DO NOT SCALE DRAWING				B
				FSCM #
				DRAWING #
				803-90313-XXX
				REV
				C
				SHEET
				NONE

radiant technology corporation
1340 north jefferson st., anaheim, california 92807

INSTALLED DRAWING
LA-310

803-90313-XXX

SCALE NONE SHEET